

Biography

Trix Bruce is an extraordinary performing artist with a spirited audience-participation entertainment style. Drawing on her background in American Sign Language (ASL) Linguistics and a life of travel and adventure, Trix excels in hilarious true-to-life storytelling and impromptu, interactive ASL artistry. Diverse interests from business to stage performance led Trix to entrepreneurial success as an instructional presenter and sought-after entertainer. Trix is also an approved sponsor for the RID Certificate Maintenance Program. Enthusiastic audiences all across America celebrate Trix Bruce! For more information, check out her website: www.TrixBruce.com

Professional summary

Provides professional development for sign language interpreters, including Interpreting Evaluations and Interpreting Enhancement, and up-to-date information on American Sign Language across America.

Presentation History

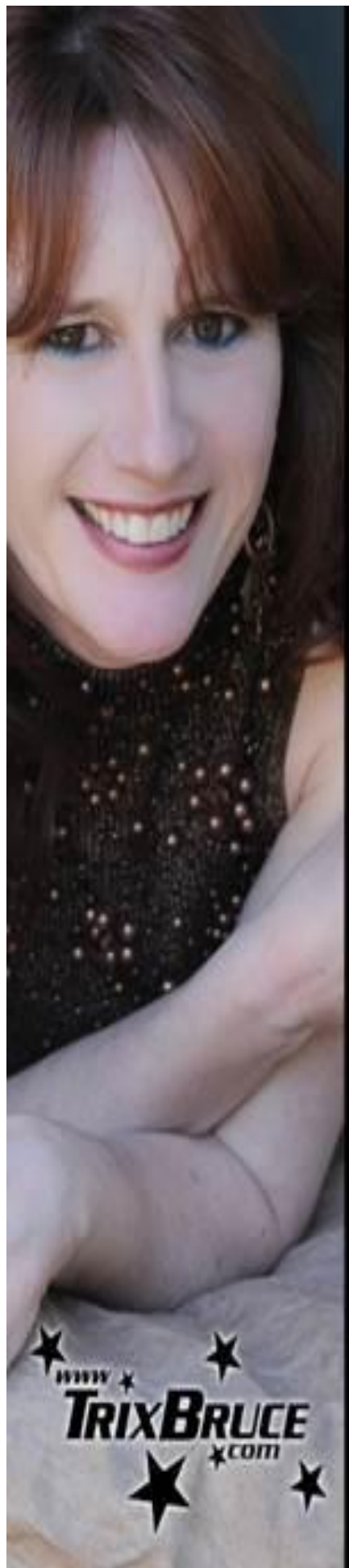
- 2016 Boys Town Hospital EIPA National Video Conference
"Adverbs, Adjectives & ASL Markers" in Omaha, NE
- 2015 Keynote Speaker, Workshop Presenter, & Entertainment Performer at Missouri Interpreter Conference
- 2015 Keynote Speaker Disabilities Award Awareness at University of Albany
- 2015 Keynote Speaker Graduation at Kentucky School for the Deaf
- 2005 Registry of Interpreters of the Deaf National Conference in San Antonio, TX
- 2003 Registry of Interpreters of the Deaf National Conference in Chicago, IL
- Regional V RID in San Diego, CA
- Regional IV RID in Oklahoma City, OK and Des Moines, IA
- Regional III RID in Indianapolis, IN
- Regional II RID in Maryland
- Regional I RID in San Diego, PR
- And various RID Chapter conferences

Evaluation, Training and Presentation

- Evaluate American Sign Language and interpreting performance via observation, assignments, research papers, and exams
- Design and direct classroom and individualized programs featuring
- ASL Linguistics (semantics, morphology, current lexical norms, classifier generation mechanisms, and idiomatic expressions)
- Principles of interpreting
- Diversity in the workplace
- Consult and aid in impromptu situations requiring communication intervention
- Coordinate American Sign Language courses for employers, employees and community members

Curriculum Development Management

- Design, prepare and present curriculum development materials and resources
- Engage in research and writing
- Maintain updated information on ASL, language evaluation, interpreter roles and assessment
- Design and develop ASL and interpreting workshops and courses
- Produce training videos to meet specific needs
- Prepare visual aids and multi-media presentations
- Create ASL and interpreting reference materials featuring text and graphics
- Prepare summaries and reports using Microsoft Word, Excel, and Publisher



Professional Activities

- Advisory Board, ASL Access (EIN 54-1887224), January 2002 – Present
- Professional Development Chair, American Sign Language Teachers Association Board, 2001 – 2007
- Registry of Interpreters for the Deaf (RID) CI Evaluator, 1997 – 2008
- Web Designer, RID Region V Conference, July 2001 – May 2002
- Professional Development Committee, Conference Interpreter Trainer (CIT)

Credentials

- RID Approved Sponsor / Independent Study Sponsor
- ASLTA Certification, Professional Level
- Teaching ASL Instructors & Interpreters Certification
- Washington Teaching Certification
- Career Development Certification
- International Sign Language Certification

Employment Experience

Trix Bruce Shows and Interpreter Education (RID
Approved Sponsor)
Chief Executive Officer
1999 - Present

Deaf Way II 2002
Deaf Interpreter

Monroe High School, Monroe, WA
American Sign Language Instructor
1996 - 2000

Communication Services, Inc., Woodinville, WA
Chief Executive Officer
1995 - 1996

Communication Services, Inc., Rochester, NY
Director of Employment Services/ASL Instructor
1993 – 1995

Eastman Kodak Company, Rochester, NY
Sign Language Instructor/ADA Consultant
1991 - 1993

Monroe Community College, Rochester, NY
Sign Language Instructor
1990

Rochester Institute of Technology, Rochester, NY
Sign Language Instructor/Tutor
1985 - 1989

University of Rochester, Rochester, NY
Freelance Sign Language Instructor/Tutor
1988

Education

University of Boston, Boston, Massachusetts
Mentoring for Interpreters (Course)

University of Colorado, Boulder, Colorado
ASL Linguistics

Central Washington University, Seattle, Washington
ASL for Teachers, 3 credits, May 2001

Seattle Central Community College, Seattle, Washington
Occupational Instruction, Certified, 1999

University of Washington Extension, Seattle, Washington
Career Development, Certified, 1996

Rochester Institute of Technology, Rochester, New York
Business Management, Bachelor of Science, 1990

National Technical Institute of the Deaf, Rochester, New York
Applied Accounting, Associate of Applied Science, 1987

National Theater of the Deaf, Hartford, Connecticut
Summer Program, 1986