

# **FREQUENT ANSWERED QUESTIONS**

## ***How long do Trix (and the crews) need to be there?***

For workshop, one hour before the workshop starts. She needs 20 minutes to set up her presentation.

About eight hours lead time is required for preparation on the day of the show. We would like to be in the theater at least two to three hours before the show begins. We need to set up our LCD projector/laptop/speakers and make sure they are all connected and working properly. We also set up backdrop and a few tables. One hour before the performance starts then we get changed and ready for the show. If there is something we need because of the uniqueness of the venue, the 3 hours gives us time to go to a store.

## ***Are the shows clean?***

Trix's shows are clean. They do not include offensive material. The Hearing World Around Me show has a few stories about embarrassing things which have happened to Trix. These help get audience members thinking about what it really means to be deaf in a hearing world. All the shows - except The Hearing World Around Me - are good for general audiences of all ages. The Hearing World Around Me is better for audiences including those age 13 and up.

## ***How long the show runs?***

The hosts can tell Trix how much she can do performances between 45 minutes to 90 minutes. If the audience wants her to do an encores (do more shows), it depends on her if she is available to do more.

## ***When someone heard Trix is coming to our town, is she available to do more services?***

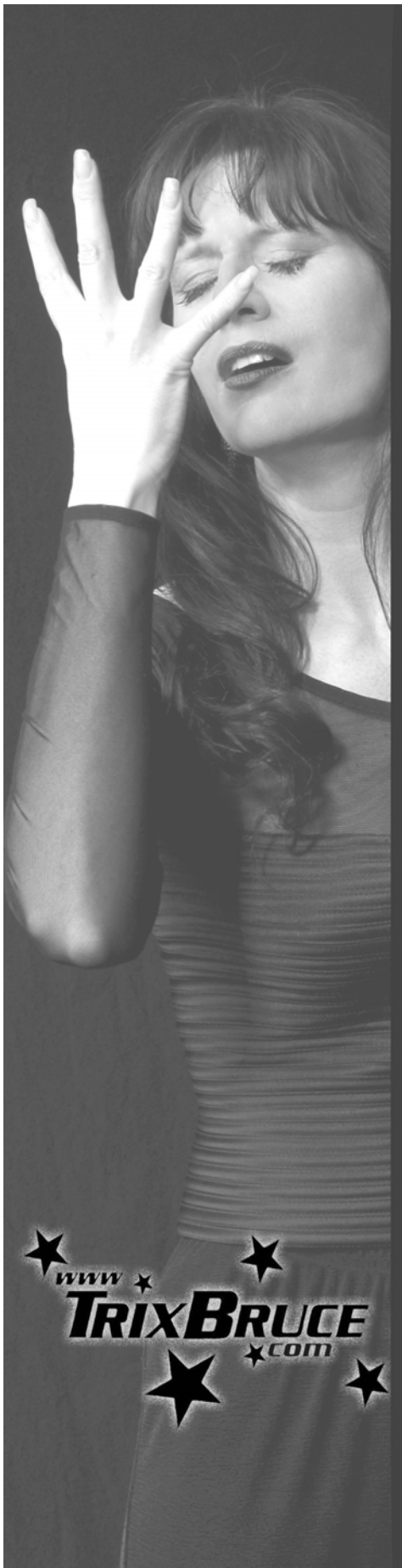
Yes and let Trix know that you are interested in using her services. She is more than happy to squeeze herself in a time permits. Be aware that there might be extra charges incurred for making changes in Trix's plan to accommodate your needs.

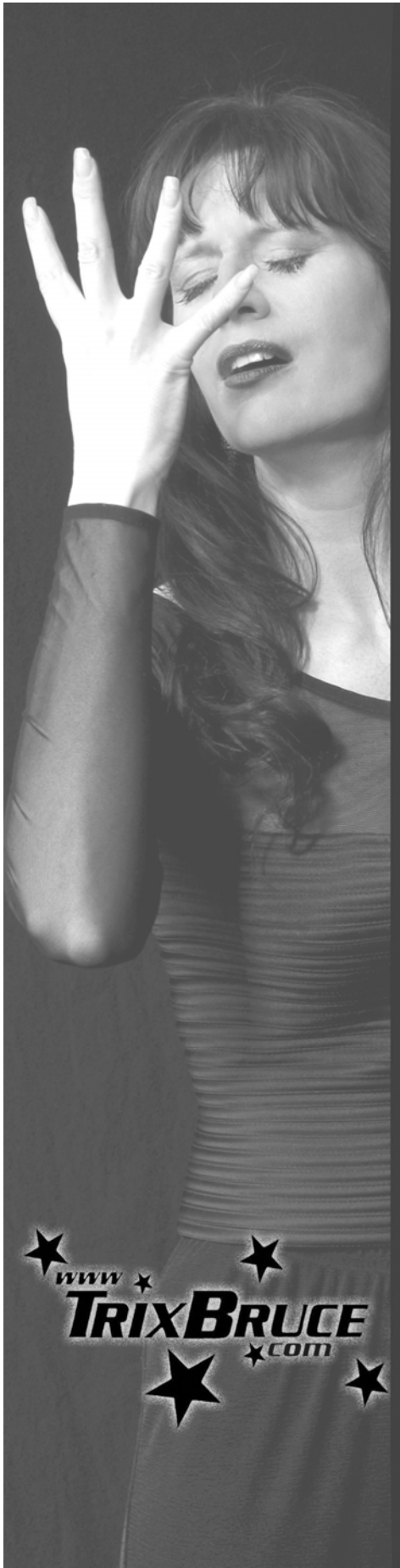
## ***Is she available to autograph photos during our social time? Can we take photos with her?***

Yes, the best times are after workshops and shows. If she was invited to attend any social clubs, she is more than happy to autograph photos at anytime. Photos are always allowed.

## ***What place does Trix always go?***

Starbucks.





***Which shows are most highly recommended? What are the difference shows?***

Trix Bruce's shows are always popular - the selection of a particular show depends on the target audience.

TALES OF A MAD MAD MAD ASL WORLD appeals to wide audiences - deaf, hearing, or mixed - who have an interest in visual-gestural sign language artistry.

THE HEARING WORLD AROUND ME is excellent for hearing audiences unfamiliar with deaf people, as well as for mixed audiences including friends of the deaf community who appreciate personal glimpses into deaf life, delivered with humor.

A STORY WORTH A THOUSAND SIGNS is a wonderful choice for children and youth. This show includes opportunities for audience members to perform with Trix.

A NIGHT IMPROV WITH TRIX "WHO'S ASL IS IT?" is excellent for any audiences. The audience gives Trix and participants a challenge to do last minute shows.

***How to get a hold of Trix Bruce at a prompt time?***

Emails are the best, Trix always check emails daily if there are any concerns. Send her all of details how to get hold of you. She is available to communicate with the hosts through the instant messages and emails.

***Which airlines she prefer?***

Most of her traveling, she uses NWA, Alaska, United. On the other hand, she is more comfortable selecting the schedules that are best fit in her plans.

***Which hotels she likes to stay?***

The Hilton family and Marriott. She always uses captioned TV and high speed internet.

***What are her favorite restaurants?***

Trix loves Italian and Seafood. During breakfast, she loves French toasts with fruits. At lunch time, she enjoys sandwiches like Panara or Quinzo's.

***Does she like to tour cities?***

Sometimes. Trix loves shopping and taking photos of the flower gardens. Trix enjoys the adventures of the mother of nature environment the best.

***What kind of gifts she like to have?***

Gift Certificates.